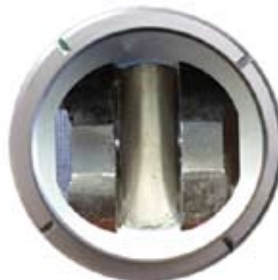


SOLAR LINEAR MOTOR - ACTUATOR

Solar Linear Motor - Actuator SM4S510M2NC



Mechanical Capabilities	
Construction material of linear motor	Stainless steel tubes and spindle and high carbon steel
Spindle type and material	ACME stainless spindle
Stroke lenght	510 mm
Max. static load	340 kgf
Dynamic load capacity	220 kgf
Rod end type	Rodend with groove 12mm and hole dia. 10mm
Speed at no load	1,5 mm/s at no load
Resolution	265,33 pulses/mm
Backlash	max 0,15 mm optionally possible less
Electrical Data	
Motor power supply	24VDC +/- 15% 2A (2,5A current capability) (In rush 300% on Max. current or softstart)
Backup battery	/
Turning time interval	/
Power consumption in operation	Rated 36W at 20% duty cycle
Standby consumption (when is not moving)	/
Electrical connections	Typical 2x1 mm ² + 5x0.22mm ² (Hole size on connector 1.5mm ²)
Environmental Data	
Operating temperature	-25°C to +70°C (optionally with artic grease for teperatures from -40°C up to +70°C)
Operation at humidity	0% to 100%, relative humidity
Corrosion, weather and chemical resistance	
Corrosion Protection	PLASOX® plasmanitriding with subsequent oxidation, corrosion resistant material, stainless steel
Packaging	
Dimensions of a packed product	1box of 1000(L) x 80(W) x 60(H) mm
Product weight	4.94 kg + 1 kg box weight
Quality Certificates	
International Protection Rating (IEC 60529)	IP33
Electromagnetic Compatibility (EMC Directive 89/336/EEC)	Yes
Low Voltage Equipment Directive (EEC Council Directive 73/23/EEC)	Yes
Optional Properties	
Heliostat usage	Yes
CPV usage (concentrated PV usage)	Yes, all types including round parabolic ***
Guarantee time	2 years as standard, 5 years for +20% *** 10 years for +35% ***

* NOTE: Lifetime of the brush in the motor is 30% shorter if motors don't have soft start

*** for additional payment

Model: SM4S510M2NC
Product code: 0077

SOLAR LINEAR ACTUATOR - MOTOR

Mechanical Drawing

